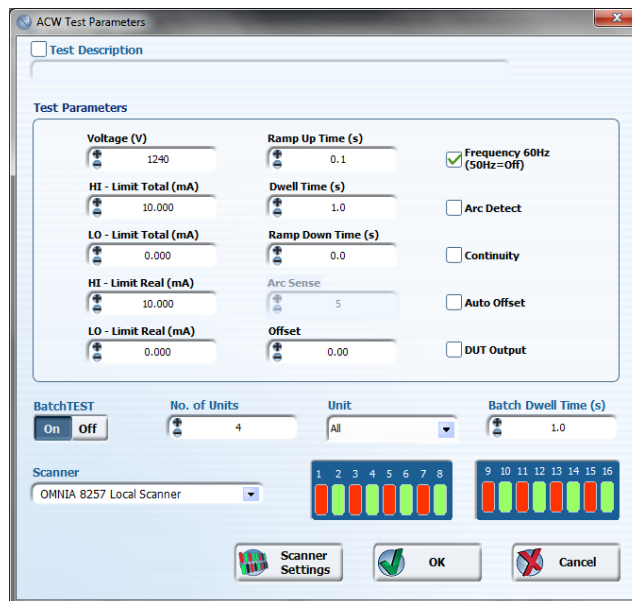


## Exploring the Features & Benefits of Autoware®3

*With a focus on safety and productivity, Autoware®3 revolutionizes the way electrical safety tests are performed.*

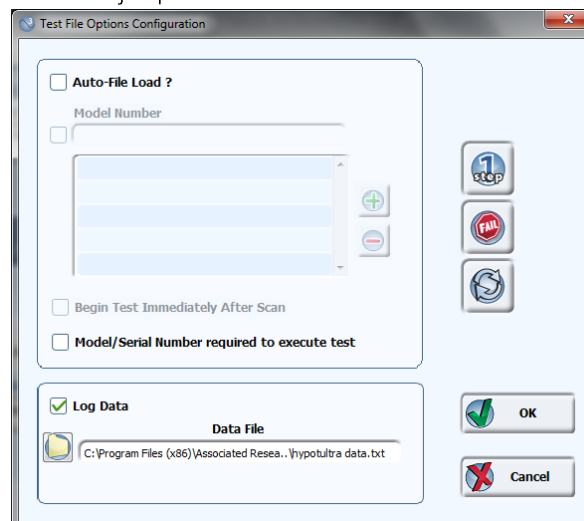
### Reduce Test Time with BatchTEST®

Shave minutes off your test routines by testing multiple DUT's simultaneously. Combined with a scanning matrix, our BatchTEST feature performs AC/DC Hipot, Continuity and Insulation Resistance tests on a batch of DUT's in a convenient 1-step test. Additionally, in the event of a failure (and ONLY in this event), Autoware3 will automatically test each individual DUT to isolate the cause of the failure.



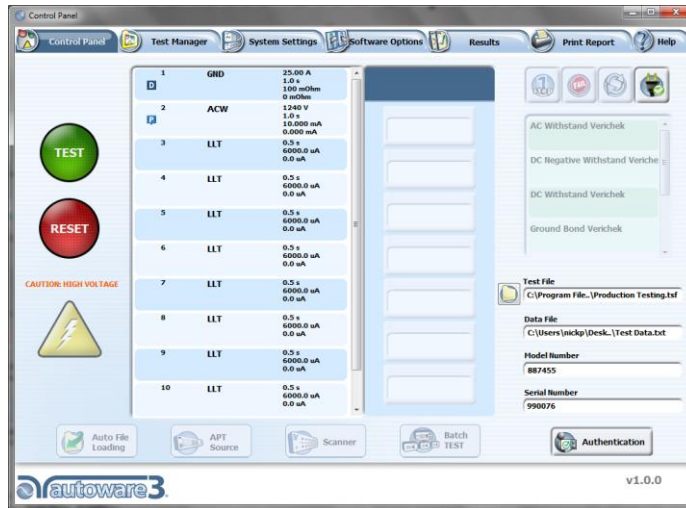
### Increase Efficiency & Reduce Waste with Data Capture

Autoware3's improved data capture capability will create significant efficiencies, reduce waste and potentially head off super colossal errors before they become major problems.



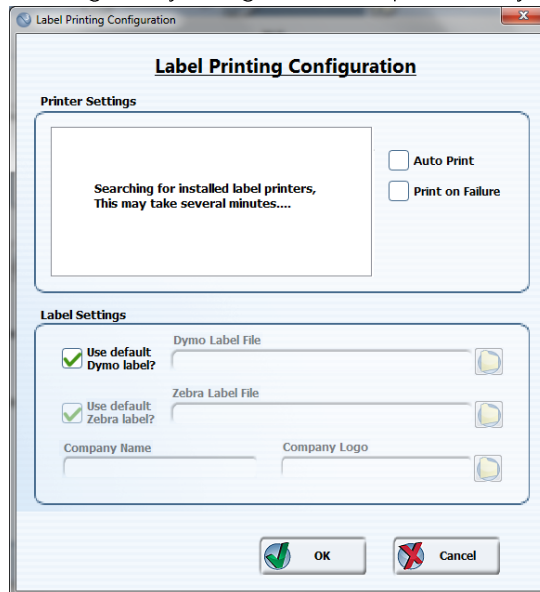
## Strengthen Productivity with Barcode Scanning Support

Increase production throughput by incorporating a barcode scan. Autoware3 happily supports direct barcode connection which enables the user to scan model and serial numbers that can be recorded in a data file.



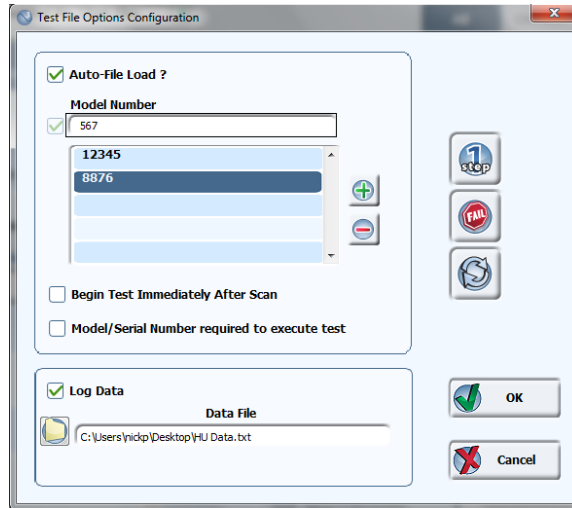
## Improved Label Printing Capability

With improved functionality, this printing capability enables you to generate labels containing test results quickly and on-demand. Autoware3 is compatible with two globally recognized label printers, Dymo and Zebra.



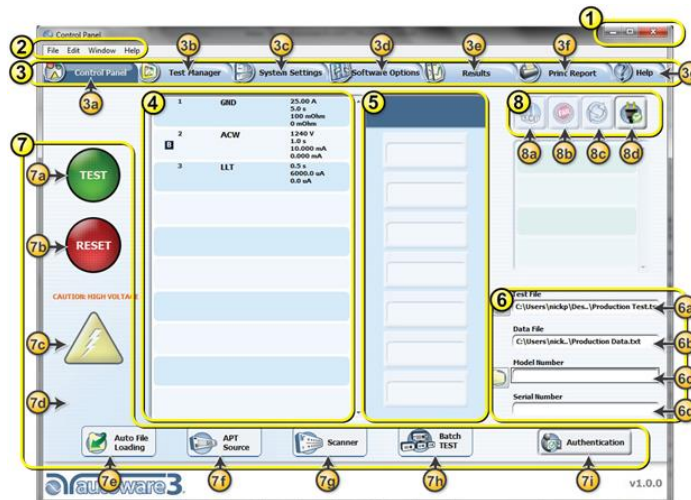
## Maximize Accuracy with Auto File Loading

Autaware3 allows you to immediately recall test files to speed up the testing process. You can easily associate a model number with a test sequence and the associated test sequence will automatically load in the Control Panel. You also have the capability to connect multiple model numbers with a single test file which ensures that the correct test sequence is accurately loaded with every test.



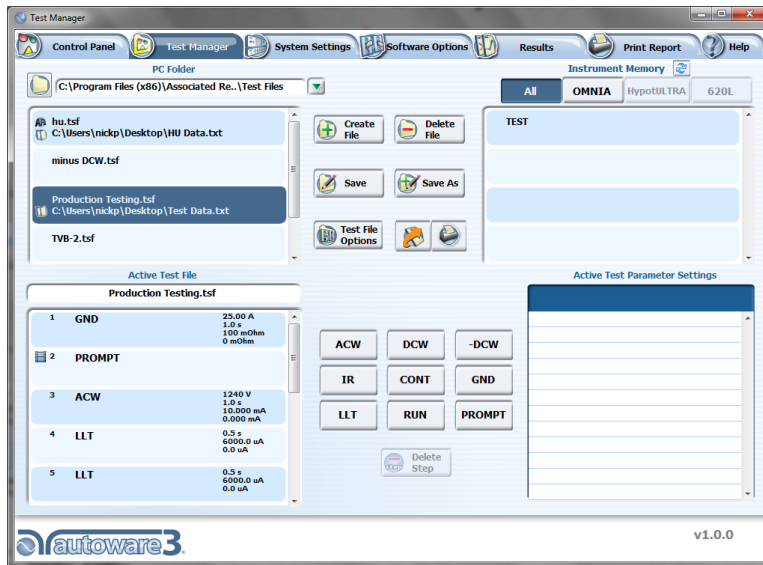
## Comprehensive Help Menu

Autaware3 provides an extensive help menu covering all features and functions of the program. This easy-to-follow layout utilizes number callouts to aid in the search to find topics and useful reference information.



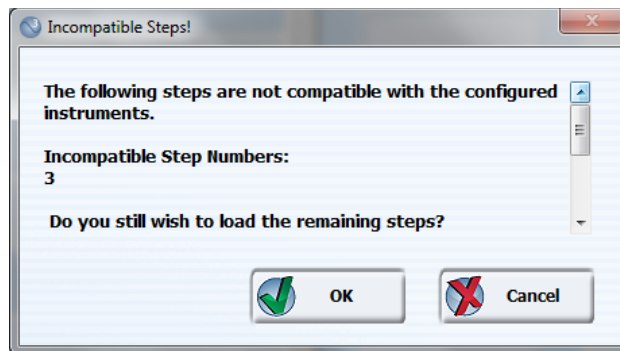
## Streamline Complicated Test Setups with LLT Auto Fill

The LLT Auto Fill feature allows you to conveniently setup multiple Line Leakage tests without the need to create multiple test steps. While traditional software programs require you to tediously setup 8 Line Leakage test steps, Autoware3 automates this time-consuming process. By enabling the LLT Auto Fill feature, you simply need to setup a single LLT test step and Autoware3 will do the work for you by creating the 7 remaining test steps. The additional test steps will utilize the same user-defined test parameters but cover the remaining 7 fault conditions (for a total of 8 fault conditions). This feature will save loads of valuable setup time for those who are required to perform Line Leakage tests.



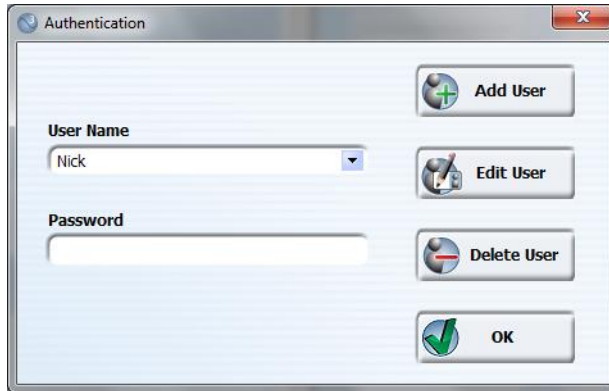
## Intelligent Error Management

Autoware3 uses a system of error management that displays intuitive error messages. Each error message gives a description of the problem as well as troubleshooting suggestions.



## Advanced Security and User Profiles

Autaware3 allows you to setup various security profiles. Each profile has a dedicated User Name, Password and Level of Access.



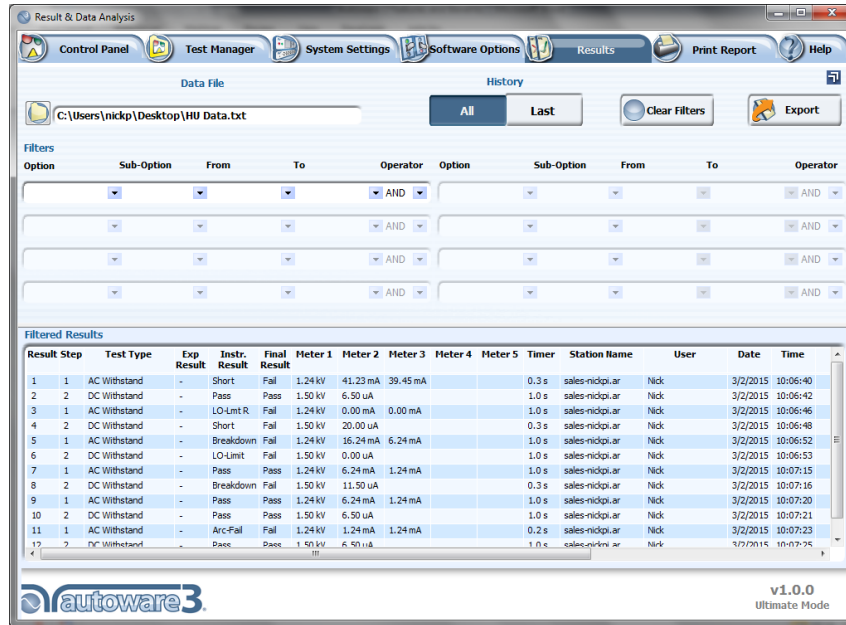
The Authentication dialog box features a title bar with a close button. It contains a 'User Name' dropdown menu with 'Nick' selected, a 'Password' text input field, and four buttons: 'Add User' (with a plus icon), 'Edit User' (with a pencil icon), 'Delete User' (with a minus icon), and 'OK' (with a checkmark icon).



The Edit User Information dialog box has a title bar with a close button. It includes a 'Select User' dropdown menu with 'Nick' selected, a 'User Name' text input field with 'Nick', an 'Access Level' dropdown menu with 'Full System Access', an 'Old Password' text input field, a 'New Password' text input field, and a 'Confirm Password' text input field. On the right side, there are two buttons: 'Back' (with a left arrow icon) and 'Save' (with a checkmark icon).

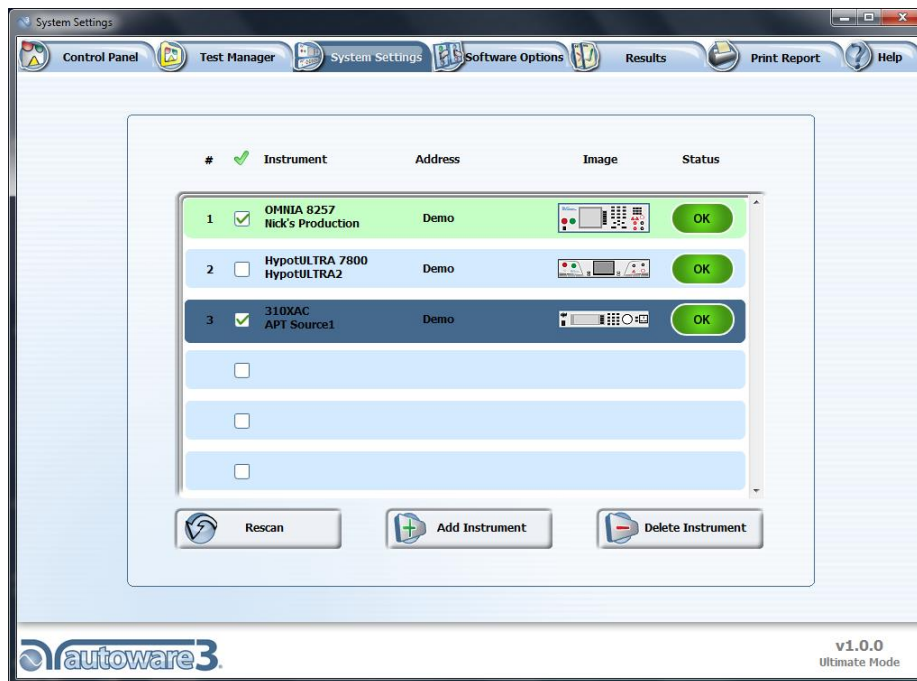
## Customizable Results

With Autaware3, customers can customize the way the software displays test results. Use Autaware3's Results window to parse the data accordingly and export to .csv file.



## APT Power Source Compatibility

Autaware3 gives the user direct control of an APT source (6000 Series, 7000 Series and 300XAC Series). This allows for automated Functional Run and Line Leakage testing.



## Multimedia Prompts

Associated Research's patented Prompt and Hold features gets an upgrade with Autoware3's Multimedia Prompt feature. Create standard text prompts to provide instructions to the test operator before a particular test executes. In addition to a short text message, customers can insert an image, an audio message or a video clip for further clarification prior to testing.

